

<div><div><div></div><div>GBLXSJT</div></div></div>																		
	1	2	3			4		5	6	7			8					
A													A					
B													B					
C													C					
D													D					
E													E					
F													F					
	REV No.	DETAILS OF MODIFICATION	SHEET No.	GRID REF	DATE	DCR No.		---	FIRST ISSUE		SHEET No.	GRID REF	DATE	DCR No.				



1

2

3

4

5

6

7

8

9

10

11

12

A

B

C

D

E

F

G

H

A

B

C

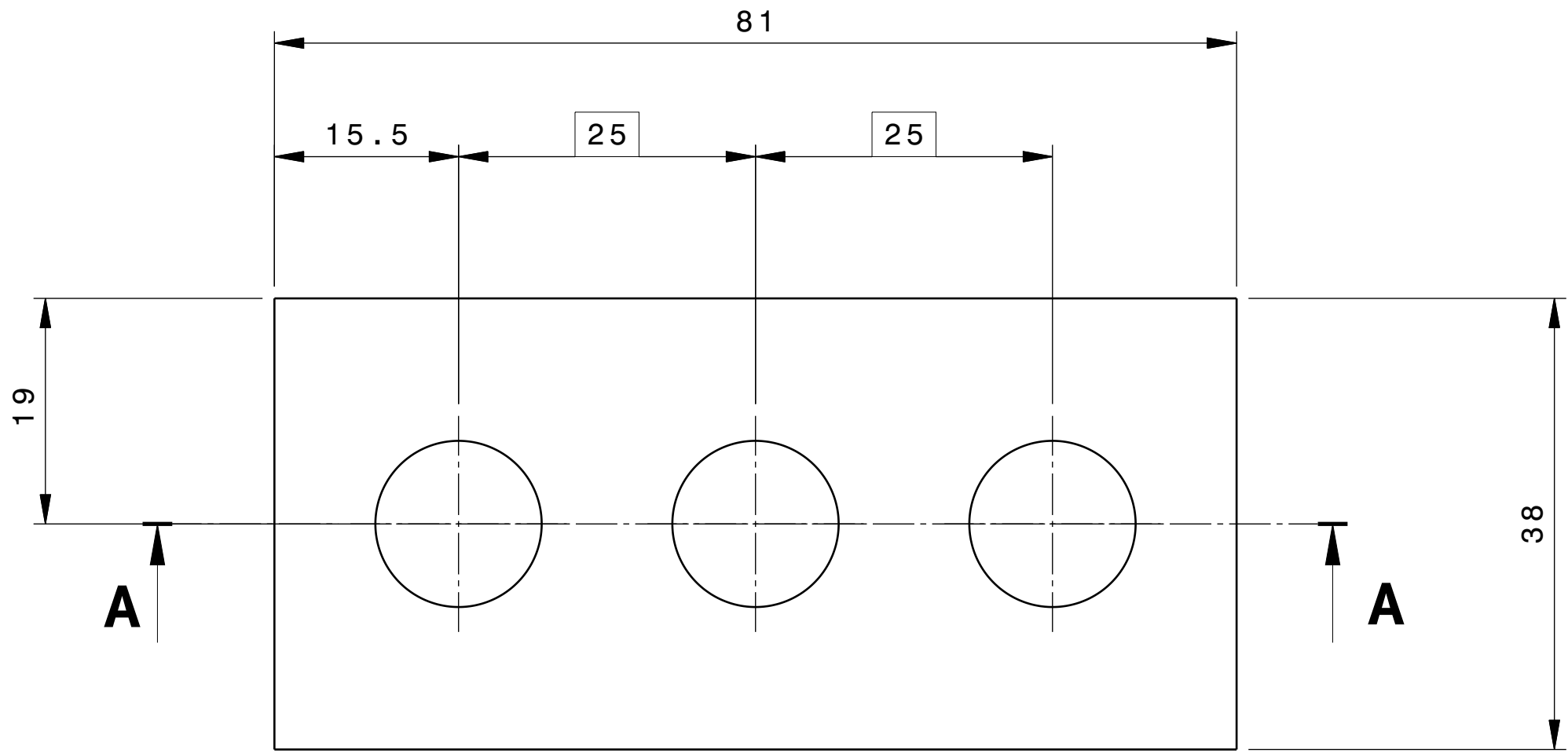
D

E

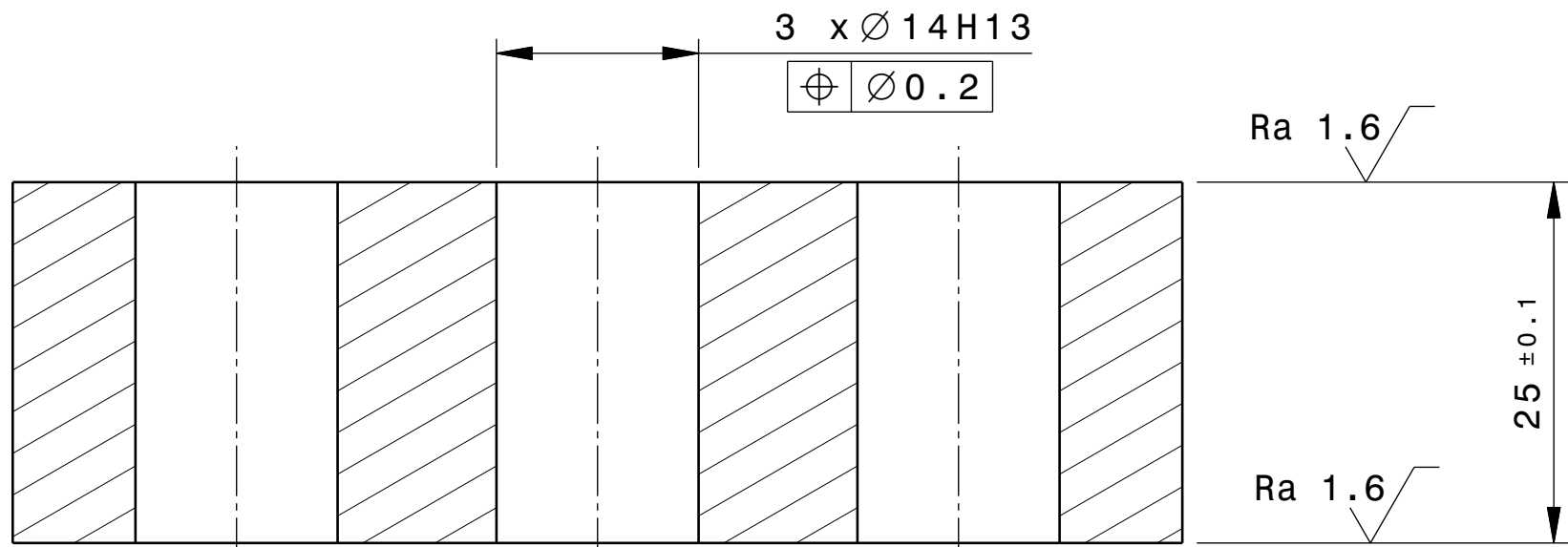
F

G

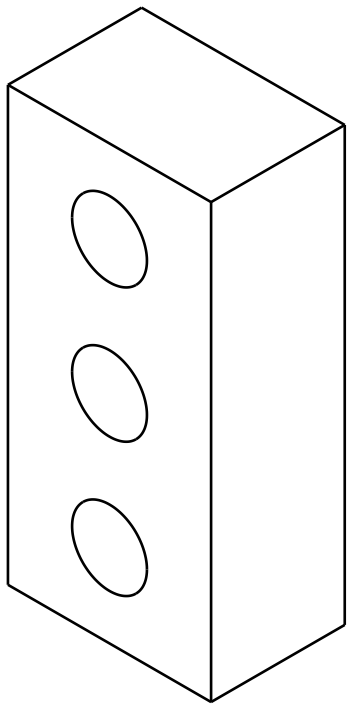
H



FRONT VIEW
Scale: 2:1





SECTION VIEW A-A
Scale: 2:1



ISOMETRIC VIEW
Scale: 1:1

- NOTES:
- 1- ALL DIMENSIONS COULD BE FOUND IN 3D CAD MODEL AS REFERENCED IN THE TITLE BLOCK
 - 2- MATERIAL OF PART IS COPPER, SEE TECH. SPEC. ITER_D_DUDS8V - Copper plate for non-DT in-vessel usage
 - 3- GENERAL TOLERANCES IS ISO 2768 mK UNLESS OTHER SPECIFIED
 - 4- ALL EXTERNAL SURFACES SHALL BE MAXIMUN ROUGHNESS OF 6.3 MICROMETERS UNLESS OTHER SPECIFIED

DRW CAD ID <i>G55LRJ</i>			APPROVED BY <i>HUNTR</i>		ITER Organization <i>INTERNAL USE</i>			LEGAL OWNER <div> china EU india japan korea russia USA</div>		
LINKED EV5 PT ID <i>FVRCPK</i>			TECHNICAL REF <i>CHENL2</i>		When received pursuant to a contract or agreement, the confidentiality clause therein shall be applicable. When received during tender phase treat as confidential.			DRAWING TITLE <i>BLKT_FW_Cu_INTERLAYER_ES_10L</i>		
LINKED 3D ID <i>FVRCQ4 ---</i>			DRAWN BY <i>ROUXD</i>							
PBS TITLE <i>Blanket System Temporary First Wall Pan</i>			SAFETY CLASS <i>NSR</i>		QUALITY CLASS <i>QC-1</i>			DOCUMENT TYPE <i>Part Drawing</i>		
DATE OF ISSUE <i>04 May 26</i>	PT MATURITY <i>FD</i>	PT VERSION <i>---</i>	SCALE <i>2:1</i>							
DR STATUS <i>A</i>	SCALE <i>2:1</i>	PT STATUS <i>A</i>	FORMAT <i>A2</i>	PBS NUMBER <i>16 TW --</i>	DRAWING NUMBER <i>08114902</i>		SHEET <i>02</i>	N°OF SHEETS <i>02</i>	REVISION <i>---</i>	
THIRD ANGLE PROJECTION <div></div>										